

提醒: 此报告仅为初步报告, 尚未得到授权人员的正式批准, 可能与最终的正式报告存在差异。

## 初步报告

No. CANEC1818520404

日期: 2018年09月14日 第1页,共17页

深圳市顺易为科技发展有限公司  
东莞市为易化工科技有限公司  
深圳市光明新区光明街道办光明社区新围20栋302号

以下测试之样品是由申请者所提供及确认: 用于CORILON CRM系列陶瓷不粘涂料

SGS工作编号: CP18-049947 - SZ

型号: CRM-00601/00602

客户参考信息: 见remark

样品接收日期: 2018年09月07日

测试周期: 2018年09月07日 - 2018年09月13日

测试要求: 根据客户要求测试

测试方法: 请参见下一页

测试结果: 请参见下一页

结论: 基于所送样品进行的测试, 镉、铅、汞、六价铬、多溴联苯(PBBs)、多溴二苯醚(PBDEs)、邻苯二甲酸酯(如邻苯二甲酸二丁酯(DBP)、邻苯二甲酸丁苯酯(BBP)、邻苯二甲酸二(2-乙基己基)酯(DEHP)和邻苯二甲酸二异丁酯(DIBP))的测试结果符合欧盟RoHS指令2011/65/EU附录II的修正指令(EU) 2015/863的限值要求。

通标标准技术服务有限公司广州分公司  
授权签名



# 初步报告

No. CANEC1818520404

日期: 2018年09月14日 第2页,共17页

测试结果:

测试样品描述:

样品编号	SGS样品ID	描述
SN1	CAN18-185204.002	黑色材料

备注:

- (1) 1 mg/kg = 1 ppm = 0.0001%
- (2) MDL = 方法检测限
- (3) ND = 未检出 (< MDL)
- (4) "-" = 未规定

## RoHS指令2011/65/EU附录II的修正指令(EU) 2015/863

测试方法: 参考IEC 62321-4:2013+A1:2017, IEC 62321-5:2013, IEC 62321-7-2:2017, IEC 62321-6:2015 和 IEC 62321-8:2017, 采用 ICP-OES, UV-Vis 和 GC-MS 进行分析.

测试项目	限值	单位	MDL	002
镉 (Cd)	100	mg/kg	2	ND
铅 (Pb)	1,000	mg/kg	2	ND
汞 (Hg)	1,000	mg/kg	2	ND
六价铬(Cr(VI))	1,000	mg/kg	8	ND
多溴联苯之和(PBBs)	1,000	mg/kg	-	ND
一溴联苯	-	mg/kg	5	ND
二溴联苯	-	mg/kg	5	ND
三溴联苯	-	mg/kg	5	ND
四溴联苯	-	mg/kg	5	ND
五溴联苯	-	mg/kg	5	ND
六溴联苯	-	mg/kg	5	ND
七溴联苯	-	mg/kg	5	ND
八溴联苯	-	mg/kg	5	ND
九溴联苯	-	mg/kg	5	ND
十溴联苯	-	mg/kg	5	ND
多溴二苯醚之和(PBDEs)	1,000	mg/kg	-	ND
一溴二苯醚	-	mg/kg	5	ND
二溴二苯醚	-	mg/kg	5	ND
三溴二苯醚	-	mg/kg	5	ND
四溴二苯醚	-	mg/kg	5	ND
五溴二苯醚	-	mg/kg	5	ND



Unless otherwise agreed in writing, this document is issued by the Company subject to its General Conditions of Service printed overleaf, available on request or accessible at <http://www.sgs.com/en/Terms-and-Conditions.aspx> and, for electronic format documents, subject to Terms and Conditions for Electronic Documents at <http://www.sgs.com/en/Terms-and-Conditions/Terms-e-Documents.aspx>. Attention is drawn to the limitation of liability, indemnification and jurisdiction issues defined therein. Any holder of this document is advised that information contained hereon reflects the Company's findings at the time of its intervention only and within the limits of Client's instructions, if any. The Company's sole responsibility is to its Client and this document does not exonerate parties to a transaction from exercising all their rights and obligations under the transaction documents. This document cannot be reproduced except in full, without prior written approval of the Company. Any unauthorized alteration, forgery or falsification of the content or appearance of this document is unlawful and offenders may be prosecuted to the fullest extent of the law. Unless otherwise stated the results shown in this test report refer only to the sample(s) tested.

Attention: To check the authenticity of testing /inspection report & certificate, please contact us at telephone: (86-755) 8307 1443, or email: CN.Doccheck@sgs.com

# 初步报告

No. CANEC1818520404

日期: 2018年09月14日 第3页,共17页

测试项目	限值	单位	MDL	002
六溴二苯醚	-	mg/kg	5	ND
七溴二苯醚	-	mg/kg	5	ND
八溴二苯醚	-	mg/kg	5	ND
九溴二苯醚	-	mg/kg	5	ND
十溴二苯醚	-	mg/kg	5	ND
邻苯二甲酸二丁酯 (DBP)	1000	mg/kg	50	ND
邻苯二甲酸丁苄酯(BBP)	1000	mg/kg	50	ND
邻苯二甲酸二(2-乙基己基)酯(DEHP)	1000	mg/kg	50	ND
邻苯二甲酸二异丁酯(DIBP)	1000	mg/kg	50	ND

备注:

(1)最大允许极限值引用自RoHS指令(EU) 2015/863。IEC 62321系列等同于 EN 62321系列  
[http://www.cenelec.eu/dyn/www/f?p=104:30:1742232870351101:::FSP\\_ORG\\_ID,FSP\\_LANG\\_ID:1258637,25](http://www.cenelec.eu/dyn/www/f?p=104:30:1742232870351101:::FSP_ORG_ID,FSP_LANG_ID:1258637,25)

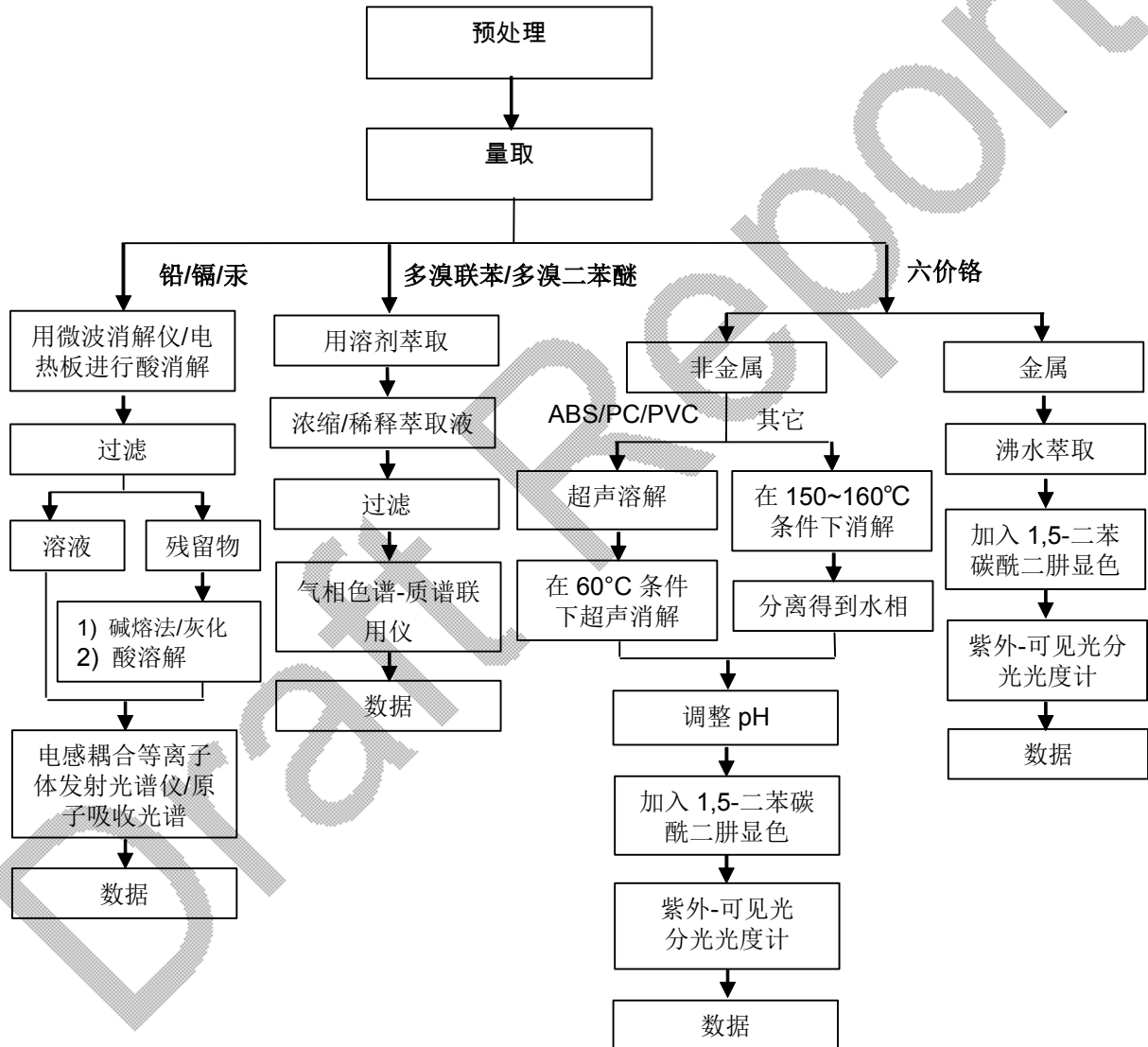
Draft Report



附件

Pb/Cd/Hg/Cr<sup>6+</sup>/PBBs/PBDEs 测试流程图

1) 样品按照下述流程被完全消解(六价铬和多溴联苯/多溴二苯醚测试除外)。



Unless otherwise agreed in writing, this document is issued by the Company subject to its General Conditions of Service printed overleaf, available on request or accessible at <http://www.sgs.com/en/Terms-and-Conditions.aspx> and, for electronic format documents, subject to Terms and Conditions for Electronic Documents at <http://www.sgs.com/en/Terms-and-Conditions/Terms-e-Documents.aspx>. Attention is drawn to the limitation of liability, indemnification and jurisdiction issues defined therein. Any holder of this document is advised that information contained hereon reflects the Company's findings at the time of its intervention only and within the limits of Client's instructions, if any. The Company's sole responsibility is to its Client and this document does not exonerate parties to a transaction from exercising all their rights and obligations under the transaction documents. This document cannot be reproduced except in full, without prior written approval of the Company. Any unauthorized alteration, forgery or falsification of the content or appearance of this document is unlawful and offenders may be prosecuted to the fullest extent of the law. Unless otherwise stated the results shown in this test report refer only to the sample(s) tested.

Attention: To check the authenticity of testing /inspection report & certificate, please contact us at telephone: (86-755) 8307 1443, or email: CN.Doccheck@sgs.com

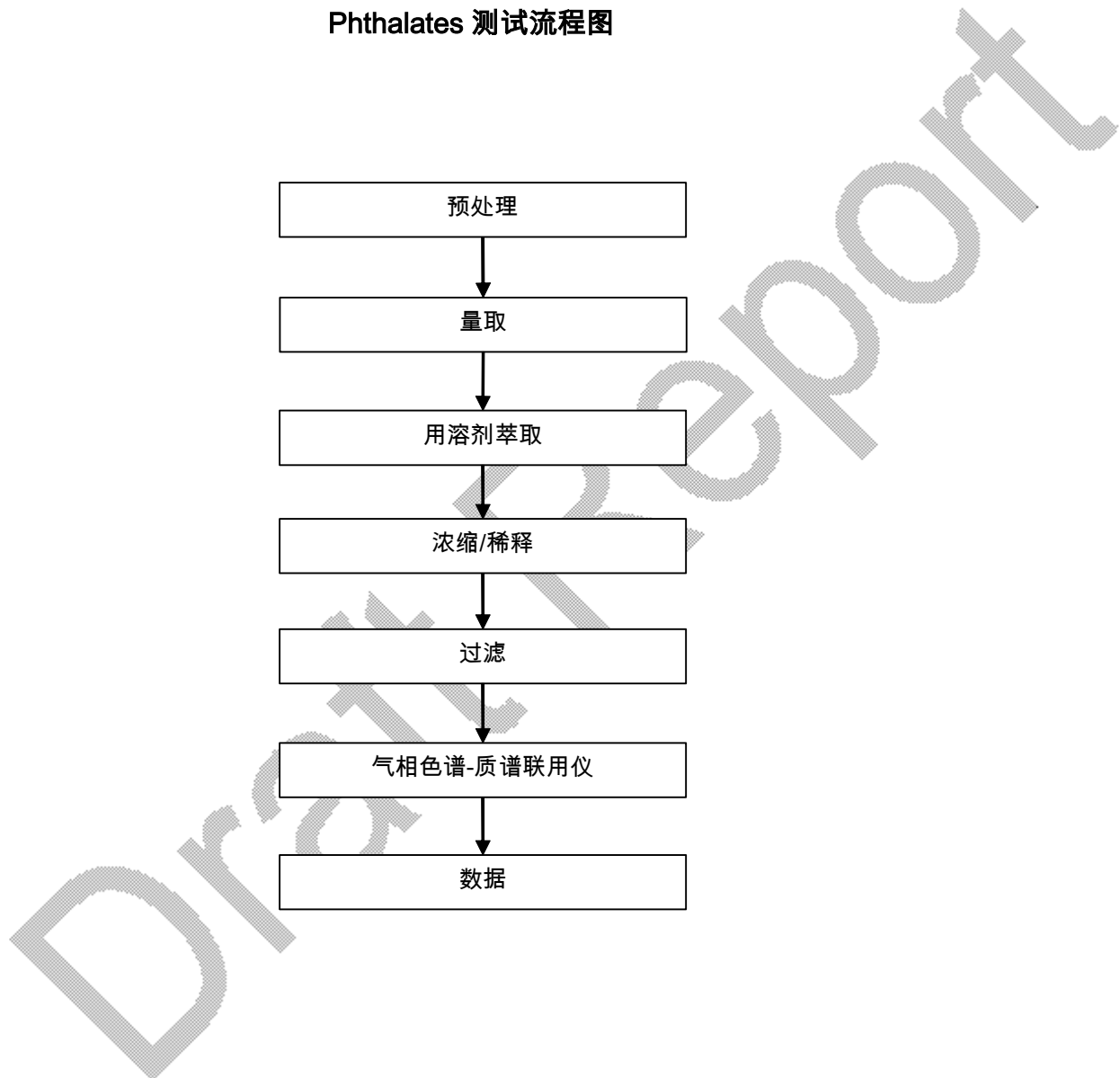
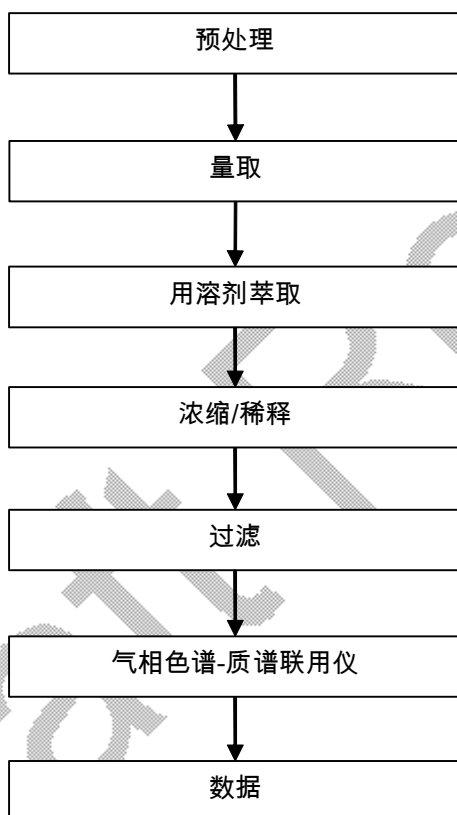
SGS-CSTC Standard & Technical Services Co., Ltd.  
Guangzhou Branch Testing Center Chemical Laboratory

198 Kezhu Road, Sciotech Park Guangzhou Economic & Technology Development District, Guangzhou, China 510663 t (86-20) 82155555 f (86-20) 82075113 www.sgsgroup.com.cn  
中国·广州·经济技术开发区科学城科珠路198号 邮编: 510663 t (86-20) 82155555 f (86-20) 82075113 e sgs.china@sgs.com



附件

Phthalates 测试流程图



Unless otherwise agreed in writing, this document is issued by the Company subject to its General Conditions of Service printed overleaf, available on request or accessible at <http://www.sgs.com/en/Terms-and-Conditions.aspx> and, for electronic format documents, subject to Terms and Conditions for Electronic Documents at <http://www.sgs.com/en/Terms-and-Conditions/Terms-e-Document.aspx>. Attention is drawn to the limitation of liability, indemnification and jurisdiction issues defined therein. Any holder of this document is advised that information contained hereon reflects the Company's findings at the time of its intervention only and within the limits of Client's instructions, if any. The Company's sole responsibility is to its Client and this document does not exonerate parties to a transaction from exercising all their rights and obligations under the transaction documents. This document cannot be reproduced except in full, without prior written approval of the Company. Any unauthorized alteration, forgery or falsification of the content or appearance of this document is unlawful and offenders may be prosecuted to the fullest extent of the law. Unless otherwise stated the results shown in this test report refer only to the sample(s) tested.

Attention: To check the authenticity of testing /inspection report & certificate, please contact us at telephone: (86-755) 8307 1443, or email: CN\_Doccheck@sgs.com

## Remark :

CRM0004 CRM0043 CRM0082 CRM0121 CRM0160 CRM0199 CRM0238 CRM0277  
CRM0005 CRM0044 CRM0083 CRM0122 CRM0161 CRM0200 CRM0239 CRM0278  
CRM0006 CRM0045 CRM0084 CRM0123 CRM0162 CRM0201 CRM0240 CRM0279  
CRM0007 CRM0046 CRM0085 CRM0124 CRM0163 CRM0202 CRM0241 CRM0280  
CRM0008 CRM0047 CRM0086 CRM0125 CRM0164 CRM0203 CRM0242 CRM0281  
CRM0009 CRM0048 CRM0087 CRM0126 CRM0165 CRM0204 CRM0243 CRM0282  
CRM0010 CRM0049 CRM0088 CRM0127 CRM0166 CRM0205 CRM0244 CRM0283  
CRM0011 CRM0050 CRM0089 CRM0128 CRM0167 CRM0206 CRM0245 CRM0284  
CRM0012 CRM0051 CRM0090 CRM0129 CRM0168 CRM0207 CRM0246 CRM0285  
CRM0013 CRM0052 CRM0091 CRM0130 CRM0169 CRM0208 CRM0247 CRM0286  
CRM0014 CRM0053 CRM0092 CRM0131 CRM0170 CRM0209 CRM0248 CRM0287  
CRM0015 CRM0054 CRM0093 CRM0132 CRM0171 CRM0210 CRM0249 CRM0288  
CRM0016 CRM0055 CRM0094 CRM0133 CRM0172 CRM0211 CRM0250 CRM0289  
CRM0017 CRM0056 CRM0095 CRM0134 CRM0173 CRM0212 CRM0251 CRM0290  
CRM0018 CRM0057 CRM0096 CRM0135 CRM0174 CRM0213 CRM0252 CRM0291  
CRM0019 CRM0058 CRM0097 CRM0136 CRM0175 CRM0214 CRM0253 CRM0292  
CRM0020 CRM0059 CRM0098 CRM0137 CRM0176 CRM0215 CRM0254 CRM0293  
CRM0021 CRM0060 CRM0099 CRM0138 CRM0177 CRM0216 CRM0255 CRM0294  
CRM0022 CRM0061 CRM0100 CRM0139 CRM0178 CRM0217 CRM0256 CRM0295  
CRM0023 CRM0062 CRM0101 CRM0140 CRM0179 CRM0218 CRM0257 CRM0296  
CRM0024 CRM0063 CRM0102 CRM0141 CRM0180 CRM0219 CRM0258 CRM0297



CRM0025 CRM0064 CRM0103 CRM0142 CRM0181 CRM0220 CRM0259 CRM0298  
 CRM0026 CRM0065 CRM0104 CRM0143 CRM0182 CRM0221 CRM0260 CRM0299  
 CRM0027 CRM0066 CRM0105 CRM0144 CRM0183 CRM0222 CRM0261 CRM0300  
 CRM0028 CRM0067 CRM0106 CRM0145 CRM0184 CRM0223 CRM0262 CRM0301  
 CRM0029 CRM0068 CRM0107 CRM0146 CRM0185 CRM0224 CRM0263 CRM0302  
 CRM0030 CRM0069 CRM0108 CRM0147 CRM0186 CRM0225 CRM0264 CRM0303  
 CRM0031 CRM0070 CRM0109 CRM0148 CRM0187 CRM0226 CRM0265 CRM0304  
 CRM0032 CRM0071 CRM0110 CRM0149 CRM0188 CRM0227 CRM0266 CRM0305  
 CRM0033 CRM0072 CRM0111 CRM0150 CRM0189 CRM0228 CRM0267 CRM0306  
 CRM0034 CRM0073 CRM0112 CRM0151 CRM0190 CRM0229 CRM0268 CRM0307  
 CRM0035 CRM0074 CRM0113 CRM0152 CRM0191 CRM0230 CRM0269 CRM0308  
 CRM0036 CRM0075 CRM0114 CRM0153 CRM0192 CRM0231 CRM0270 CRM0309  
 CRM0037 CRM0076 CRM0115 CRM0154 CRM0193 CRM0232 CRM0271 CRM0310  
 CRM0038 CRM0077 CRM0116 CRM0155 CRM0194 CRM0233 CRM0272 CRM0311  
 CRM0039 CRM0078 CRM0117 CRM0156 CRM0195 CRM0234 CRM0273 CRM0312  
 CRM0040 CRM0079 CRM0118 CRM0157 CRM0196 CRM0235 CRM0274 CRM0313  
 CRM0041 CRM0080 CRM0119 CRM0158 CRM0197 CRM0236 CRM0275 CRM0314  
 CRM0042 CRM0081 CRM0120 CRM0159 CRM0198 CRM0237 CRM0276 CRM0315  
 CRM0355 CRM0397 CRM0436 CRM0474 CRM0513 CRM0552 CRM0591 CRM0629  
 CRM0356 CRM0398 CRM0437 CRM0475 CRM0514 CRM0553 CRM0592 CRM0630  
 CRM0357 CRM0399 CRM0438 CRM0476 CRM0515 CRM0554 CRM0593 CRM0631  
 CRM0358 CRM0400 CRM0439 CRM0477 CRM0516 CRM0555 CRM0594 CRM0632



Unless otherwise agreed in writing, this document is issued by the Company subject to its General Conditions of Service printed overleaf, available on request or accessible at <http://www.sgs.com/en/Terms-and-Conditions.aspx> and, for electronic format documents, subject to Terms and Conditions for Electronic Documents at <http://www.sgs.com/en/Terms-and-Conditions/Terms-e-Documents.aspx>. Attention is drawn to the limitation of liability, indemnification and jurisdiction issues defined therein. Any holder of this document is advised that information contained hereon reflects the Company's findings at the time of its intervention only and within the limits of Client's instructions, if any. The Company's sole responsibility is to its Client and this document does not exonerate parties to a transaction from exercising all their rights and obligations under the transaction documents. This document cannot be reproduced except in full, without prior written approval of the Company. Any unauthorized alteration, forgery or falsification of the content or appearance of this document is unlawful and offenders may be prosecuted to the fullest extent of the law. Unless otherwise stated the results shown in this test report refer only to the sample(s) tested.

Attention: To check the authenticity of testing /inspection report & certificate, please contact us at telephone: (86-755) 8307 1443, or email: [CN.Doccheck@sgs.com](mailto:CN.Doccheck@sgs.com)

# 初步报告

No. CANEC1818520404

日期: 2018年09月14日 第8页,共17页

CRM0359 CRM0401 CRM0440 CRM0478 CRM0517 CRM0556 CRM0595 CRM0633  
CRM0360 CRM0402 CRM0441 CRM0479 CRM0518 CRM0557 CRM0596 CRM0634  
CRM0361 CRM0403 CRM0442 CRM0480 CRM0519 CRM0558 CRM0597 CRM0635  
CRM0362 CRM0404 CRM0443 CRM0481 CRM0520 CRM0559 CRM0598 CRM0636  
CRM0363 CRM0405 CRM0444 CRM0482 CRM0521 CRM0560 CRM0599 CRM0637  
CRM0364 CRM0406 CRM0445 CRM0483 CRM0522 CRM0561 CRM0600 CRM0638  
CRM0365 CRM0407 CRM0446 CRM0484 CRM0523 CRM0562 CRM0601 CRM0639  
CRM0366 CRM0408 CRM0447 CRM0485 CRM0524 CRM0563 CRM0602 CRM0640  
CRM0367 CRM0409 CRM0448 CRM0486 CRM0525 CRM0564 CRM0603 CRM0641  
CRM0368 CRM0410 CRM0449 CRM0487 CRM0526 CRM0565 CRM0604 CRM0642  
CRM0369 CRM0411 CRM0450 CRM0488 CRM0527 CRM0566 CRM0605 CRM0643  
CRM0370 CRM0412 CRM0451 CRM0489 CRM0528 CRM0567 CRM0606 CRM0644  
CRM0371 CRM0413 CRM0452 CRM0490 CRM0529 CRM0568 CRM0607 CRM0645  
CRM0372 CRM0414 CRM0453 CRM0491 CRM0530 CRM0569 CRM0608 CRM0646  
CRM0373 CRM0415 CRM0454 CRM0492 CRM0531 CRM0570 CRM0609 CRM0647  
CRM0374 CRM0416 CRM0455 CRM0493 CRM0532 CRM0571 CRM0610 CRM0648  
CRM0375 CRM0417 CRM0456 CRM0494 CRM0533 CRM0572 CRM0611 CRM0649  
CRM0376 CRM0418 CRM0457 CRM0495 CRM0534 CRM0573 CRM0612 CRM0650  
CRM0377 CRM0419 CRM0458 CRM0496 CRM0535 CRM0574 CRM0613 CRM0651  
CRM0378 CRM0420 CRM0459 CRM0497 CRM0536 CRM0575 CRM0614 CRM0652  
CRM0379 CRM0421 CRM0460 CRM0498 CRM0537 CRM0576 CRM0615 CRM0653  
CRM0380 CRM0422 CRM0461 CRM0499 CRM0538 CRM0577 CRM0616 CRM0654



Unless otherwise agreed in writing, this document is issued by the Company subject to its General Conditions of Service printed overleaf, available on request or accessible at <http://www.sgs.com/en/Terms-and-Conditions.aspx> and, for electronic format documents, subject to Terms and Conditions for Electronic Documents at <http://www.sgs.com/en/Terms-and-Conditions/Terms-e-Documents.aspx>. Attention is drawn to the limitation of liability, indemnification and jurisdiction issues defined therein. Any holder of this document is advised that information contained hereon reflects the Company's findings at the time of its intervention only and within the limits of Client's instructions, if any. The Company's sole responsibility is to its Client and this document does not exonerate parties to a transaction from exercising all their rights and obligations under the transaction documents. This document cannot be reproduced except in full, without prior written approval of the Company. Any unauthorized alteration, forgery or falsification of the content or appearance of this document is unlawful and offenders may be prosecuted to the fullest extent of the law. Unless otherwise stated the results shown in this test report refer only to the sample(s) tested.

Attention: To check the authenticity of testing /inspection report & certificate, please contact us at telephone: (86-755) 8307 1443, or email: [CN.Doccheck@sgs.com](mailto:CN.Doccheck@sgs.com)



CRM0381 CRM0423 CRM0462 CRM0500 CRM0539 CRM0578 CRM0617 CRM0655  
 CRM0382 CRM0424 CRM0463 CRM0501 CRM0540 CRM0579 CRM0618 CRM0656  
 CRM0383 CRM0425 CRM0464 CRM0502 CRM0541 CRM0580 CRM0619 CRM0657  
 CRM0384 CRM0426 CRM0465 CRM0503 CRM0542 CRM0581 CRM0620 CRM0658  
 CRM0385 CRM0427 CRM0466 CRM0504 CRM0543 CRM0582 CRM0621 CRM0659  
 CRM0386 CRM0428 CRM0467 CRM0505 CRM0544 CRM0583 CRM0622 CRM0660  
 CRM0387 CRM0429 CRM0468 CRM0506 CRM0545 CRM0584 CRM0623 CRM0661  
 CRM0388 CRM0430 CRM0469 CRM0507 CRM0546 CRM0585 CRM0624 CRM0662  
 CRM0389 CRM0431 CRM0470 CRM0508 CRM0547 CRM0586 CRM0625 CRM0663  
 CRM0390 CRM0432 CRM0471 CRM0509 CRM0548 CRM0587 CRM0626 CRM0664  
 CRM0391 CRM0433 CRM0472 CRM0510 CRM0549 CRM0588 CRM0627 CRM0665  
 CRM0392 CRM0434 CRM0473 CRM0511 CRM0550 CRM0589 CRM0628 CRM0666  
 CRM0393 CRM0435 CRM0474 CRM0512 CRM0551 CRM0590 CRM0629 CRM0667  
 CRM0706 CRM0748 CRM0790 CRM0832 CRM0874 CRM0916 CRM0958 CRM1000  
 CRM0707 CRM0749 CRM0791 CRM0833 CRM0875 CRM0917 CRM0959 CRM1001  
 CRM0708 CRM0750 CRM0792 CRM0834 CRM0876 CRM0918 CRM0960 CRM1002  
 CRM0709 CRM0751 CRM0793 CRM0835 CRM0877 CRM0919 CRM0961 CRM1003  
 CRM0710 CRM0752 CRM0794 CRM0836 CRM0878 CRM0920 CRM0962 CRM1004  
 CRM0711 CRM0753 CRM0795 CRM0837 CRM0879 CRM0921 CRM0963 CRM1005  
 CRM0712 CRM0754 CRM0796 CRM0838 CRM0880 CRM0922 CRM0964 CRM1006  
 CRM0713 CRM0755 CRM0797 CRM0839 CRM0881 CRM0923 CRM0965 CRM1007  
 CRM0714 CRM0756 CRM0798 CRM0840 CRM0882 CRM0924 CRM0966 CRM1008



Unless otherwise agreed in writing, this document is issued by the Company subject to its General Conditions of Service printed overleaf, available on request or accessible at <http://www.sgs.com/en/Terms-and-Conditions.aspx> and, for electronic format documents, subject to Terms and Conditions for Electronic Documents at <http://www.sgs.com/en/Terms-and-Conditions/Terms-e-Documents.aspx>. Attention is drawn to the limitation of liability, indemnification and jurisdiction issues defined therein. Any holder of this document is advised that information contained hereon reflects the Company's findings at the time of its intervention only and within the limits of Client's instructions, if any. The Company's sole responsibility is to its Client and this document does not exonerate parties to a transaction from exercising all their rights and obligations under the transaction documents. This document cannot be reproduced except in full, without prior written approval of the Company. Any unauthorized alteration, forgery or falsification of the content or appearance of this document is unlawful and offenders may be prosecuted to the fullest extent of the law. Unless otherwise stated the results shown in this test report refer only to the sample(s) tested.

Attention: To check the authenticity of testing /inspection report & certificate, please contact us at telephone: (86-755) 8307 1443, or email: CN\_Doccheck@sgs.com

CRM0715 CRM0757 CRM0799 CRM0841 CRM0883 CRM0925 CRM0967 CRM1009  
CRM0716 CRM0758 CRM0800 CRM0842 CRM0884 CRM0926 CRM0968 CRM1010  
CRM0717 CRM0759 CRM0801 CRM0843 CRM0885 CRM0927 CRM0969 CRM1011  
CRM0718 CRM0760 CRM0802 CRM0844 CRM0886 CRM0928 CRM0970 CRM1012  
CRM0719 CRM0761 CRM0803 CRM0845 CRM0887 CRM0929 CRM0971 CRM1013  
CRM0720 CRM0762 CRM0804 CRM0846 CRM0888 CRM0930 CRM0972 CRM1014  
CRM0721 CRM0763 CRM0805 CRM0847 CRM0889 CRM0931 CRM0973 CRM1015  
CRM0722 CRM0764 CRM0806 CRM0848 CRM0890 CRM0932 CRM0974 CRM1016  
CRM0723 CRM0765 CRM0807 CRM0849 CRM0891 CRM0933 CRM0975 CRM1017  
CRM0724 CRM0766 CRM0808 CRM0850 CRM0892 CRM0934 CRM0976 CRM1018  
CRM0725 CRM0767 CRM0809 CRM0851 CRM0893 CRM0935 CRM0977 CRM1019  
CRM0726 CRM0768 CRM0810 CRM0852 CRM0894 CRM0936 CRM0978 CRM1020  
CRM0727 CRM0769 CRM0811 CRM0853 CRM0895 CRM0937 CRM0979 CRM1021  
CRM0728 CRM0770 CRM0812 CRM0854 CRM0896 CRM0938 CRM0980 CRM1022  
CRM0729 CRM0771 CRM0813 CRM0855 CRM0897 CRM0939 CRM0981 CRM1023  
CRM0730 CRM0772 CRM0814 CRM0856 CRM0898 CRM0940 CRM0982 CRM1024  
CRM0731 CRM0773 CRM0815 CRM0857 CRM0899 CRM0941 CRM0983 CRM1025  
CRM0732 CRM0774 CRM0816 CRM0858 CRM0900 CRM0942 CRM0984 CRM1026  
CRM0733 CRM0775 CRM0817 CRM0859 CRM0901 CRM0943 CRM0985 CRM1027  
CRM0734 CRM0776 CRM0818 CRM0860 CRM0902 CRM0944 CRM0986 CRM1028  
CRM0735 CRM0777 CRM0819 CRM0861 CRM0903 CRM0945 CRM0987 CRM1029  
CRM0736 CRM0778 CRM0820 CRM0862 CRM0904 CRM0946 CRM0988 CRM1030



Unless otherwise agreed in writing, this document is issued by the Company subject to its General Conditions of Service printed overleaf, available on request or accessible at <http://www.sgs.com/en/Terms-and-Conditions.aspx> and, for electronic format documents, subject to Terms and Conditions for Electronic Documents at <http://www.sgs.com/en/Terms-and-Conditions/Terms-e-Document.aspx>. Attention is drawn to the limitation of liability, indemnification and jurisdiction issues defined therein. Any holder of this document is advised that information contained hereon reflects the Company's findings at the time of its intervention only and within the limits of Client's instructions, if any. The Company's sole responsibility is to its Client and this document does not exonerate parties to a transaction from exercising all their rights and obligations under the transaction documents. This document cannot be reproduced except in full, without prior written approval of the Company. Any unauthorized alteration, forgery or falsification of the content or appearance of this document is unlawful and offenders may be prosecuted to the fullest extent of the law. Unless otherwise stated the results shown in this test report refer only to the sample(s) tested.

Attention: To check the authenticity of testing /inspection report & certificate, please contact us at telephone: (86-755) 8307 1443, or email: CN\_Doccheck@sgs.com

CRM0737 CRM0779 CRM0821 CRM0863 CRM0905 CRM0947 CRM0989 CRM1031  
 CRM0738 CRM0780 CRM0822 CRM0864 CRM0906 CRM0948 CRM0990 CRM1032  
 CRM0739 CRM0781 CRM0823 CRM0865 CRM0907 CRM0949 CRM0991 CRM1033  
 CRM0740 CRM0782 CRM0824 CRM0866 CRM0908 CRM0950 CRM0992 CRM1034  
 CRM0741 CRM0783 CRM0825 CRM0867 CRM0909 CRM0951 CRM0993 CRM1035  
 CRM0742 CRM0784 CRM0826 CRM0868 CRM0910 CRM0952 CRM0994 CRM1036  
 CRM0743 CRM0785 CRM0827 CRM0869 CRM0911 CRM0953 CRM0995 CRM1037  
 CRM0744 CRM0786 CRM0828 CRM0870 CRM0912 CRM0954 CRM0996 CRM1038  
 CRM0745 CRM0787 CRM0829 CRM0871 CRM0913 CRM0955 CRM0997 CRM1039  
 CRM0746 CRM0788 CRM0830 CRM0872 CRM0914 CRM0956 CRM0998 CRM1040  
 CRM0747 CRM0789 CRM0831 CRM0873 CRM0915 CRM0957 CRM0999 CRM1041  
 CRM1084 CRM1114 CRM1144 CRM1174 CRM1204 CRM1234 CRM1264 CRM1294  
 CRM1085 CRM1115 CRM1145 CRM1175 CRM1205 CRM1235 CRM1265 CRM1295  
 CRM1086 CRM1116 CRM1146 CRM1176 CRM1206 CRM1236 CRM1266 CRM1296  
 CRM1087 CRM1117 CRM1147 CRM1177 CRM1207 CRM1237 CRM1267 CRM1297  
 CRM1088 CRM1118 CRM1148 CRM1178 CRM1208 CRM1238 CRM1268 CRM1298  
 CRM1089 CRM1119 CRM1149 CRM1179 CRM1209 CRM1239 CRM1269 CRM1299  
 CRM1090 CRM1120 CRM1150 CRM1180 CRM1210 CRM1240 CRM1270 CRM1300  
 CRM1091 CRM1121 CRM1151 CRM1181 CRM1211 CRM1241 CRM1271 CRM1301  
 CRM1092 CRM1122 CRM1152 CRM1182 CRM1212 CRM1242 CRM1272 CRM1302  
 CRM1093 CRM1123 CRM1153 CRM1183 CRM1213 CRM1243 CRM1273 CRM1303  
 CRM1094 CRM1124 CRM1154 CRM1184 CRM1214 CRM1244 CRM1274 CRM1304



Unless otherwise agreed in writing, this document is issued by the Company subject to its General Conditions of Service printed overleaf, available on request or accessible at <http://www.sgs.com/en/Terms-and-Conditions.aspx> and, for electronic format documents, subject to Terms and Conditions for Electronic Documents at <http://www.sgs.com/en/Terms-and-Conditions/Terms-e-Documents.aspx>. Attention is drawn to the limitation of liability, indemnification and jurisdiction issues defined therein. Any holder of this document is advised that information contained hereon reflects the Company's findings at the time of its intervention only and within the limits of Client's instructions, if any. The Company's sole responsibility is to its Client and this document does not exonerate parties to a transaction from exercising all their rights and obligations under the transaction documents. This document cannot be reproduced except in full, without prior written approval of the Company. Any unauthorized alteration, forgery or falsification of the content or appearance of this document is unlawful and offenders may be prosecuted to the fullest extent of the law. Unless otherwise stated the results shown in this test report refer only to the sample(s) tested.

Attention: To check the authenticity of testing /inspection report & certificate, please contact us at telephone: (86-755) 8307 1443, or email: CN.Doccheck@sgs.com



CRM1095 CRM1125 CRM1155 CRM1185 CRM1215 CRM1245 CRM1275 CRM1305  
 CRM1096 CRM1126 CRM1156 CRM1186 CRM1216 CRM1246 CRM1276 CRM1306  
 CRM1097 CRM1127 CRM1157 CRM1187 CRM1217 CRM1247 CRM1277 CRM1307  
 CRM1098 CRM1128 CRM1158 CRM1188 CRM1218 CRM1248 CRM1278 CRM1308  
 CRM1099 CRM1129 CRM1159 CRM1189 CRM1219 CRM1249 CRM1279 CRM1309  
 CRM1100 CRM1130 CRM1160 CRM1190 CRM1220 CRM1250 CRM1280 CRM1310  
 CRM1101 CRM1131 CRM1161 CRM1191 CRM1221 CRM1251 CRM1281 CRM1311  
 CRM1102 CRM1132 CRM1162 CRM1192 CRM1222 CRM1252 CRM1282 CRM1312  
 CRM1103 CRM1133 CRM1163 CRM1193 CRM1223 CRM1253 CRM1283 CRM1313  
 CRM1104 CRM1134 CRM1164 CRM1194 CRM1224 CRM1254 CRM1284 CRM1314  
 CRM1105 CRM1135 CRM1165 CRM1195 CRM1225 CRM1255 CRM1285 CRM1315  
 CRM1106 CRM1136 CRM1166 CRM1196 CRM1226 CRM1256 CRM1286 CRM1316  
 CRM1107 CRM1137 CRM1167 CRM1197 CRM1227 CRM1257 CRM1287 CRM1317  
 CRM1108 CRM1138 CRM1168 CRM1198 CRM1228 CRM1258 CRM1288 CRM1318  
 CRM1109 CRM1139 CRM1169 CRM1199 CRM1229 CRM1259 CRM1289 CRM1319  
 CRM1110 CRM1140 CRM1170 CRM1200 CRM1230 CRM1260 CRM1290 CRM1320  
 CRM1111 CRM1141 CRM1171 CRM1201 CRM1231 CRM1261 CRM1291 CRM1321  
 CRM1112 CRM1142 CRM1172 CRM1202 CRM1232 CRM1262 CRM1292 CRM1322  
 CRM1113 CRM1143 CRM1173 CRM1203 CRM1233 CRM1263 CRM1293 CRM1323  
 CRM1354 CRM1392 CRM1430 CRM1468 CRM1506 CRM1544 CRM1582 CRM1620  
 CRM1355 CRM1393 CRM1431 CRM1469 CRM1507 CRM1545 CRM1583 CRM1621  
 CRM1356 CRM1394 CRM1432 CRM1470 CRM1508 CRM1546 CRM1584 CRM1622



Unless otherwise agreed in writing, this document is issued by the Company subject to its General Conditions of Service printed overleaf, available on request or accessible at <http://www.sgs.com/en/Terms-and-Conditions.aspx> and, for electronic format documents, subject to Terms and Conditions for Electronic Documents at <http://www.sgs.com/en/Terms-and-Conditions/Terms-e-Documents.aspx>. Attention is drawn to the limitation of liability, indemnification and jurisdiction issues defined therein. Any holder of this document is advised that information contained hereon reflects the Company's findings at the time of its intervention only and within the limits of Client's instructions, if any. The Company's sole responsibility is to its Client and this document does not exonerate parties to a transaction from exercising all their rights and obligations under the transaction documents. This document cannot be reproduced except in full, without prior written approval of the Company. Any unauthorized alteration, forgery or falsification of the content or appearance of this document is unlawful and offenders may be prosecuted to the fullest extent of the law. Unless otherwise stated the results shown in this test report refer only to the sample(s) tested.

Attention: To check the authenticity of testing /inspection report & certificate, please contact us at telephone: (86-755) 8307 1443, or email: CN\_Doccheck@sgs.com



CRM1357 CRM1395 CRM1433 CRM1471 CRM1509 CRM1547 CRM1585 CRM1623  
CRM1358 CRM1396 CRM1434 CRM1472 CRM1510 CRM1548 CRM1586 CRM1624  
CRM1359 CRM1397 CRM1435 CRM1473 CRM1511 CRM1549 CRM1587 CRM1625  
CRM1360 CRM1398 CRM1436 CRM1474 CRM1512 CRM1550 CRM1588 CRM1626  
CRM1361 CRM1399 CRM1437 CRM1475 CRM1513 CRM1551 CRM1589 CRM1627  
CRM1362 CRM1400 CRM1438 CRM1476 CRM1514 CRM1552 CRM1590 CRM1628  
CRM1363 CRM1401 CRM1439 CRM1477 CRM1515 CRM1553 CRM1591 CRM1629  
CRM1364 CRM1402 CRM1440 CRM1478 CRM1516 CRM1554 CRM1592 CRM1630  
CRM1365 CRM1403 CRM1441 CRM1479 CRM1517 CRM1555 CRM1593 CRM1631  
CRM1366 CRM1404 CRM1442 CRM1480 CRM1518 CRM1556 CRM1594 CRM1632  
CRM1367 CRM1405 CRM1443 CRM1481 CRM1519 CRM1557 CRM1595 CRM1633  
CRM1368 CRM1406 CRM1444 CRM1482 CRM1520 CRM1558 CRM1596 CRM1634  
CRM1369 CRM1407 CRM1445 CRM1483 CRM1521 CRM1559 CRM1597 CRM1635  
CRM1370 CRM1408 CRM1446 CRM1484 CRM1522 CRM1560 CRM1598 CRM1636  
CRM1371 CRM1409 CRM1447 CRM1485 CRM1523 CRM1561 CRM1599 CRM1637  
CRM1372 CRM1410 CRM1448 CRM1486 CRM1524 CRM1562 CRM1600 CRM1638  
CRM1373 CRM1411 CRM1449 CRM1487 CRM1525 CRM1563 CRM1601 CRM1639  
CRM1374 CRM1412 CRM1450 CRM1488 CRM1526 CRM1564 CRM1602 CRM1640  
CRM1375 CRM1413 CRM1451 CRM1489 CRM1527 CRM1565 CRM1603 CRM1641  
CRM1376 CRM1414 CRM1452 CRM1490 CRM1528 CRM1566 CRM1604 CRM1642  
CRM1377 CRM1415 CRM1453 CRM1491 CRM1529 CRM1567 CRM1605 CRM1643  
CRM1378 CRM1416 CRM1454 CRM1492 CRM1530 CRM1568 CRM1606 CRM1644



Unless otherwise agreed in writing, this document is issued by the Company subject to its General Conditions of Service printed overleaf, available on request or accessible at <http://www.sgs.com/en/Terms-and-Conditions.aspx> and, for electronic format documents, subject to Terms and Conditions for Electronic Documents at <http://www.sgs.com/en/Terms-and-Conditions/Terms-e-Documents.aspx>. Attention is drawn to the limitation of liability, indemnification and jurisdiction issues defined therein. Any holder of this document is advised that information contained hereon reflects the Company's findings at the time of its intervention only and within the limits of Client's instructions, if any. The Company's sole responsibility is to its Client and this document does not exonerate parties to a transaction from exercising all their rights and obligations under the transaction documents. This document cannot be reproduced except in full, without prior written approval of the Company. Any unauthorized alteration, forgery or falsification of the content or appearance of this document is unlawful and offenders may be prosecuted to the fullest extent of the law. Unless otherwise stated the results shown in this test report refer only to the sample(s) tested.

Attention: To check the authenticity of testing /inspection report & certificate, please contact us at telephone: (86-755) 8307 1443, or email: CN.Doccheck@sgs.com

CRM1379 CRM1417 CRM1455 CRM1493 CRM1531 CRM1569 CRM1607 CRM1645  
 CRM1380 CRM1418 CRM1456 CRM1494 CRM1532 CRM1570 CRM1608 CRM1646  
 CRM1381 CRM1419 CRM1457 CRM1495 CRM1533 CRM1571 CRM1609 CRM1647  
 CRM1382 CRM1420 CRM1458 CRM1496 CRM1534 CRM1572 CRM1610 CRM1648  
 CRM1383 CRM1421 CRM1459 CRM1497 CRM1535 CRM1573 CRM1611 CRM1649  
 CRM1384 CRM1422 CRM1460 CRM1498 CRM1536 CRM1574 CRM1612 CRM1650  
 CRM1385 CRM1423 CRM1461 CRM1499 CRM1537 CRM1575 CRM1613 CRM1651  
 CRM1386 CRM1424 CRM1462 CRM1500 CRM1538 CRM1576 CRM1614 CRM1652  
 CRM1387 CRM1425 CRM1463 CRM1501 CRM1539 CRM1577 CRM1615 CRM1653  
 CRM1388 CRM1426 CRM1464 CRM1502 CRM1540 CRM1578 CRM1616 CRM1654  
 CRM1389 CRM1427 CRM1465 CRM1503 CRM1541 CRM1579 CRM1617 CRM1655  
 CRM1390 CRM1428 CRM1466 CRM1504 CRM1542 CRM1580 CRM1618 CRM1656  
 CRM1391 CRM1429 CRM1467 CRM1505 CRM1543 CRM1581 CRM1619 CRM1657  
 CRM1696 CRM1732 CRM1768 CRM1804 CRM1840 CRM1876 CRM1912 CRM1948  
 CRM1697 CRM1733 CRM1769 CRM1805 CRM1841 CRM1877 CRM1913 CRM1949  
 CRM1698 CRM1734 CRM1770 CRM1806 CRM1842 CRM1878 CRM1914 CRM1950  
 CRM1699 CRM1735 CRM1771 CRM1807 CRM1843 CRM1879 CRM1915 CRM1951  
 CRM1700 CRM1736 CRM1772 CRM1808 CRM1844 CRM1880 CRM1916 CRM1952  
 CRM1701 CRM1737 CRM1773 CRM1809 CRM1845 CRM1881 CRM1917 CRM1953  
 CRM1702 CRM1738 CRM1774 CRM1810 CRM1846 CRM1882 CRM1918 CRM1954  
 CRM1703 CRM1739 CRM1775 CRM1811 CRM1847 CRM1883 CRM1919 CRM1955  
 CRM1704 CRM1740 CRM1776 CRM1812 CRM1848 CRM1884 CRM1920 CRM1956



Unless otherwise agreed in writing, this document is issued by the Company subject to its General Conditions of Service printed overleaf, available on request or accessible at <http://www.sgs.com/en/Terms-and-Conditions.aspx> and, for electronic format documents, subject to Terms and Conditions for Electronic Documents at <http://www.sgs.com/en/Terms-and-Conditions/Terms-e-Documents.aspx>. Attention is drawn to the limitation of liability, indemnification and jurisdiction issues defined therein. Any holder of this document is advised that information contained hereon reflects the Company's findings at the time of its intervention only and within the limits of Client's instructions, if any. The Company's sole responsibility is to its Client and this document does not exonerate parties to a transaction from exercising all their rights and obligations under the transaction documents. This document cannot be reproduced except in full, without prior written approval of the Company. Any unauthorized alteration, forgery or falsification of the content or appearance of this document is unlawful and offenders may be prosecuted to the fullest extent of the law. Unless otherwise stated the results shown in this test report refer only to the sample(s) tested.

Attention: To check the authenticity of testing /inspection report & certificate, please contact us at telephone: (86-755) 8307 1443, or email: CN\_Doccheck@sgs.com

CRM1705 CRM1741 CRM1777 CRM1813 CRM1849 CRM1885 CRM1921 CRM1957  
 CRM1706 CRM1742 CRM1778 CRM1814 CRM1850 CRM1886 CRM1922 CRM1958  
 CRM1707 CRM1743 CRM1779 CRM1815 CRM1851 CRM1887 CRM1923 CRM1959  
 CRM1708 CRM1744 CRM1780 CRM1816 CRM1852 CRM1888 CRM1924 CRM1960  
 CRM1709 CRM1745 CRM1781 CRM1817 CRM1853 CRM1889 CRM1925 CRM1961  
 CRM1710 CRM1746 CRM1782 CRM1818 CRM1854 CRM1890 CRM1926 CRM1962  
 CRM1711 CRM1747 CRM1783 CRM1819 CRM1855 CRM1891 CRM1927 CRM1963  
 CRM1712 CRM1748 CRM1784 CRM1820 CRM1856 CRM1892 CRM1928 CRM1964  
 CRM1713 CRM1749 CRM1785 CRM1821 CRM1857 CRM1893 CRM1929 CRM1965  
 CRM1714 CRM1750 CRM1786 CRM1822 CRM1858 CRM1894 CRM1930 CRM1966  
 CRM1715 CRM1751 CRM1787 CRM1823 CRM1859 CRM1895 CRM1931 CRM1967  
 CRM1716 CRM1752 CRM1788 CRM1824 CRM1860 CRM1896 CRM1932 CRM1968  
 CRM1717 CRM1753 CRM1789 CRM1825 CRM1861 CRM1897 CRM1933 CRM1969  
 CRM1718 CRM1754 CRM1790 CRM1826 CRM1862 CRM1898 CRM1934 CRM1970  
 CRM1719 CRM1755 CRM1791 CRM1827 CRM1863 CRM1899 CRM1935 CRM1971  
 CRM1720 CRM1756 CRM1792 CRM1828 CRM1864 CRM1900 CRM1936 CRM1972  
 CRM1721 CRM1757 CRM1793 CRM1829 CRM1865 CRM1901 CRM1937 CRM1973  
 CRM1722 CRM1758 CRM1794 CRM1830 CRM1866 CRM1902 CRM1938 CRM1974  
 CRM1723 CRM1759 CRM1795 CRM1831 CRM1867 CRM1903 CRM1939 CRM1975  
 CRM1724 CRM1760 CRM1796 CRM1832 CRM1868 CRM1904 CRM1940 CRM1976  
 CRM1725 CRM1761 CRM1797 CRM1833 CRM1869 CRM1905 CRM1941 CRM1977  
 CRM1726 CRM1762 CRM1798 CRM1834 CRM1870 CRM1906 CRM1942 CRM1978



Unless otherwise agreed in writing, this document is issued by the Company subject to its General Conditions of Service printed overleaf, available on request or accessible at <http://www.sgs.com/en/Terms-and-Conditions.aspx> and, for electronic format documents, subject to Terms and Conditions for Electronic Documents at <http://www.sgs.com/en/Terms-and-Conditions/Terms-e-Documents.aspx>. Attention is drawn to the limitation of liability, indemnification and jurisdiction issues defined therein. Any holder of this document is advised that information contained hereon reflects the Company's findings at the time of its intervention only and within the limits of Client's instructions, if any. The Company's sole responsibility is to its Client and this document does not exonerate parties to a transaction from exercising all their rights and obligations under the transaction documents. This document cannot be reproduced except in full, without prior written approval of the Company. Any unauthorized alteration, forgery or falsification of the content or appearance of this document is unlawful and offenders may be prosecuted to the fullest extent of the law. Unless otherwise stated the results shown in this test report refer only to the sample(s) tested.

Attention: To check the authenticity of testing /inspection report & certificate, please contact us at telephone: (86-755) 8307 1443, or email: CN\_Doccheck@sgs.com



CRM1727 CRM1763 CRM1799 CRM1835 CRM1871 CRM1907 CRM1943 CRM1979  
 CRM1728 CRM1764 CRM1800 CRM1836 CRM1872 CRM1908 CRM1944 CRM1980  
 CRM1729 CRM1765 CRM1801 CRM1837 CRM1873 CRM1909 CRM1945 CRM1981  
 CRM1730 CRM1766 CRM1802 CRM1838 CRM1874 CRM1910 CRM1946 CRM1982  
 CRM1731 CRM1767 CRM1803 CRM1839 CRM1875 CRM1911 CRM1947 CRM1983  
 CRM0316 CRM0333 CRM0350 CRM0679 CRM0696 CRM1049 CRM1066 CRM1083  
 CRM0317 CRM0334 CRM0351 CRM0680 CRM0697 CRM1050 CRM1067 CRM1324  
 CRM0318 CRM0335 CRM0352 CRM0681 CRM0698 CRM1051 CRM1068 CRM1325  
 CRM0319 CRM0336 CRM0353 CRM0682 CRM0699 CRM1052 CRM1069 CRM1326  
 CRM0320 CRM0337 CRM0354 CRM0683 CRM0700 CRM1053 CRM1070 CRM1327  
 CRM0321 CRM0338 CRM0667 CRM0684 CRM0701 CRM1054 CRM1071 CRM1328  
 CRM0322 CRM0339 CRM0668 CRM0685 CRM0702 CRM1055 CRM1072 CRM1329  
 CRM0323 CRM0340 CRM0669 CRM0686 CRM0703 CRM1056 CRM1073 CRM1330  
 CRM0324 CRM0341 CRM0670 CRM0687 CRM0704 CRM1057 CRM1074 CRM1331  
 CRM0325 CRM0342 CRM0671 CRM0688 CRM0705 CRM1058 CRM1075 CRM1332  
 CRM0326 CRM0343 CRM0672 CRM0689 CRM1042 CRM1059 CRM1076 CRM1333  
 CRM0327 CRM0344 CRM0673 CRM0690 CRM1043 CRM1060 CRM1077 CRM1334  
 CRM0328 CRM0345 CRM0674 CRM0691 CRM1044 CRM1061 CRM1078 CRM1335  
 CRM0329 CRM0346 CRM0675 CRM0692 CRM1045 CRM1062 CRM1079 CRM1336  
 CRM0330 CRM0347 CRM0676 CRM0693 CRM1046 CRM1063 CRM1080 CRM1337  
 CRM0331 CRM0348 CRM0677 CRM0694 CRM1047 CRM1064 CRM1081 CRM1338  
 CRM0332 CRM0349 CRM0678 CRM0695 CRM1048 CRM1065 CRM1082 CRM1339



Unless otherwise agreed in writing, this document is issued by the Company subject to its General Conditions of Service printed overleaf, available on request or accessible at <http://www.sgs.com/en/Terms-and-Conditions.aspx> and, for electronic format documents, subject to Terms and Conditions for Electronic Documents at <http://www.sgs.com/en/Terms-and-Conditions/Terms-e-Documents.aspx>. Attention is drawn to the limitation of liability, indemnification and jurisdiction issues defined therein. Any holder of this document is advised that information contained hereon reflects the Company's findings at the time of its intervention only and within the limits of Client's instructions, if any. The Company's sole responsibility is to its Client and this document does not exonerate parties to a transaction from exercising all their rights and obligations under the transaction documents. This document cannot be reproduced except in full, without prior written approval of the Company. Any unauthorized alteration, forgery or falsification of the content or appearance of this document is unlawful and offenders may be prosecuted to the fullest extent of the law. Unless otherwise stated the results shown in this test report refer only to the sample(s) tested.

Attention: To check the authenticity of testing /inspection report & certificate, please contact us at telephone: (86-755) 8307 1443, or email: CN\_Doccheck@sgs.com



CRM1340 CRM1348 CRM1660 CRM1668 CRM1676 CRM1684 CRM1692 CRM1988  
 CRM1341 CRM1349 CRM1661 CRM1669 CRM1677 CRM1685 CRM1693 CRM1989  
 CRM1342 CRM1350 CRM1662 CRM1670 CRM1678 CRM1686 CRM1694 CRM1990  
 CRM1343 CRM1351 CRM1663 CRM1671 CRM1679 CRM1687 CRM1695 CRM1991  
 CRM1344 CRM1352 CRM1664 CRM1672 CRM1680 CRM1688 CRM1984 CRM1992  
 CRM1345 CRM1353 CRM1665 CRM1673 CRM1681 CRM1689 CRM1985 CRM1993  
 CRM1346 CRM1658 CRM1666 CRM1674 CRM1682 CRM1690 CRM1986 CRM1994  
 CRM1347 CRM1659 CRM1667 CRM1675 CRM1683 CRM1691 CRM1987 CRM1995  
 CRM1996 CRM1999 CRM2002 CRM2005 CRM2008 CRM2011 CRM2014 CRM2017  
 CRM1997 CRM2000 CRM2003 CRM2006 CRM2009 CRM2012 CRM2015 CRM2018  
 CRM1998 CRM2001 CRM2004 CRM2007 CRM2010 CRM2013 CRM2016 CRM2019

样品照片:



此照片仅限于随SGS正本报告使用

\*\*\* 报告完 \*\*\*

**提醒:** 此报告仅为初步报告, 尚未得到授权人员的正式批准, 可能与最终的正式报告存在差异。

